



GISSA-KZN AGM

The GISSA-KZN AGM was held at the South African Sugar Association on Friday 10 February 2006. This event was a great success with around 100 delegates attending.

The theme was *Professional Registration: Options for GIS practitioners*. The talks were very informative and the presentations are available in electronic format.

professionals in the geoscience and remote sensing fields

- Newsletters notifying you of current affairs, technical developments and events

Renewal of GISSA-KZN Memberships

For those of you that are not current GISSA members, i.e. **if you never attended our AGM held on 10 February 2006**, please pay careful attention to the following instructions that will make your registration as simple as possible.

GISSA-KZN Registration Procedure

1. Log onto the GISSA's Electronic Membership Application Form (<http://www.gissa.org.za/memberjoin.asp>)
2. Enter all your details and submit
3. Deposit your subscription money in the following account – **NOT** the outdated NAGIS account provided on the website

Updated GISSA-KZN bank details:

Account Name: GISSA KZN
 Bank Name: Nedbank
 Branch Name: Broadway
 Branch Code: 11 44 05
 Account Number: 21 44 08 92 80
 Account Type: Savings

4. Please fax a copy of your deposit slip to:

Attention : Chris Byren
 Fax No : 031 303 5376
 Subject: : GISSA-KZN 2006
 Membership Fees for (**Your Name**)
 Message : Please include your **e-mail** address and other contact information

Please follow all four steps. If you do not fax a copy of your deposit slip you we will not know that you have paid and cannot activate your login account or membership.

GISSA-KZN AGM Presentations

Friday 10 Feb 2006

KwaShukela Auditorium,
 Mount Edgecombe

Position IT (Sponsor).....	Chris Yelland
PLATO & SAGI	Noel Gehren
South African Council for Natural Scientific Professions.....	Dawie van Wyk
Department of Land Affairs.....	Abigail Thabethe
SAQA / NQF	Heinrich du Plessis

Please follow the links in the table above to download the appropriate presentation.

Gozololo Centre for Needy Children

At our AGM we attempted to raise funds for an important charity, the Gozololo Centre for needy children, that provides HIV/Aids support and counseling as well as schooling for homeless children. For each cell phone that rang during the proceedings, we requested a R50.00 donation to this worthy charity. Well, from the 102 cell phones present, not a single interruption took place (amazing)! A disappointing total of R42.50 was collected for this needy cause.

So what do you get for your R100 GISSA Subscription?

- Free Position Magazine
- Discounted fees to GISSA workshops
- The opportunity to network with

Click here to join GISSA-KZN!



GISSA-KZN MARCH 2006 NEWS LETTER

GISSA-KZN Committee

The GISSA-KZN committee members elected at the last AGM are:

Name	GISSA-KZN Title
Neil Hartley	Chairman
Rajan Munien	Secretariat
Claudia Ringewaldt	Special Interests Group
Craig Gers	Public Relations and Vice Chairman
Chris Byren	Treasurer
Vishanth Singh	By-Laws
Brent Steyn	Committee member
Dave Purdon	Committee member
Sam Dagane	Committee member

Upcoming Events

Event	Date and Contact
GIMS User Conference	8-10 May 2006. Summer Place, Hyde Park, Johannesburg
8 th Annual Southern African MapInfo User Conference	8th June 2006 at the VW Conference Centre, Midrand, RSA Dinah Manaka +27 11 807 3807 for more details.
International Geo-Science and Remote Sensing Symposium 2006	31 July to 4 Aug 2006 Colorado Convention Centre, Denver Colorado, US
ESRI User Conference	August 7-11, 2006 San Diego Convention Center, San Diego, California, US

Tech Talk

ER Mapper & Image Web Server Newsletter for Europe, Africa and Middle East (EAME)

(Source: Miguel A. Urech, Mediterranean Region Manager, Issue 66 - Thursday, March 2, 2006)

1. AutoCAD 2004-2006 ECW JPEG 2000 plug-in (version 2.1, Beta 1) released

Version: 2.1 Beta 1

This product version is in a beta / Release Candidate cycle. Please provide feedback on your experience.

This plug-in enables users of the AutoCAD 2004, 2005 or 2006 to directly read ER Mapper image files and ER Mapper image processing algorithms, as well as JPEG 2000.

Experience the full power of ER Mapper algorithms from within the AutoCAD 2004-2006 product family. Give your GIS data real world meaning by presenting it over image backdrops.

Version Features:

Now supports AutoCAD 2006

Plug-in built on the latest ER Mapper libraries

Menu loading problems fixed for AutoCAD 2004

AutoCAD 2005 projects saved with ECWP links now open correctly

Special Notes:

This product is currently not compatible with AutoDesk Map, Map 3D and Land Desktop as they have native support for ECW images.

More information and download:

http://www.ermapper.com/downloads/download_view.aspx?PRODUCT_VERSION_ID=291

Click here to join GISSA-KZN!

2. Press Release: ER Mapper releases new easy-to-use Image Mosaic and Compression Software

-- Perth, Australia, February 15, 2006

Responding to the widespread demand for a specialised geospatial image mosaic and compression software application, ER Mapper has released ER Mapper Mosaic-Balance-Compress (MBC). Retailing for US\$1000, ER Mapper MBC provides a simple interface so even a novice user can create high-value compressed image mosaics.

Using ER Mapper's acclaimed mosaicking and colour balancing technology, MBC turns a collection of image tiles into a single compressed image mosaic. The mosaic allows an uninterrupted view of an entire land area without having to traverse hundreds of smaller image tiles. The image mosaic can be used easily in any GIS, CAD, desktop or web application.

See the full Press Release at:

http://www.ermapper.com/company/news_view.aspx?PRESS_RELEASE_ID=401

3. Press Release: Australian Indigenous Land Managers use ER Mapper for Remote Sensing

-- Perth, Australia, 8 February 2006

The Batchelor Institute of Indigenous Tertiary Education® (BIITE) has purchased the ER Mapper image processing application to assist their Land Management students in analyzing satellite imagery. Indigenous Land Managers are faced with the difficult task of managing large areas of land with limited resources and little information on the current state of the environment. ER Mapper and associated Remote Sensing techniques are important tools, providing cost effective information to assist in the management of these areas.

4. Press Release: Terralink International adopts ER Mapper

-- Perth, Australia, 22 February 2006

Terralink International has selected the ER Mapper image processing application to assist in the datum / projection conversion of existing image catalogues. Terralink will be converting its assets from NZMG49 to NZTM GD2000 and vice versa using the NTV 2 grid transformation.

Many of the datasets used by Terralink are more than 30GB in size. Many of these datasets will be split into 1:50k topographic sheets, to facilitate management and tracking.

See the full Press Release at:

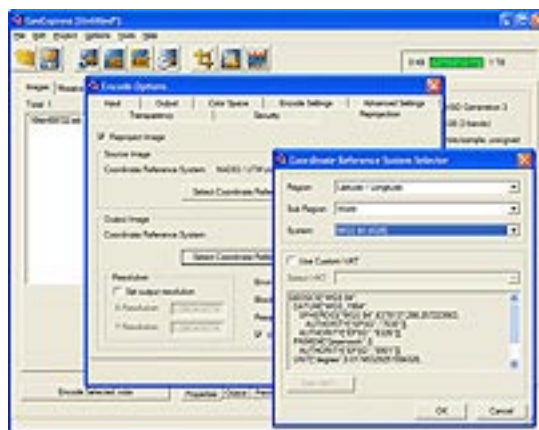
http://www.ermapper.com/company/news_view.aspx?PRESS_RELEASE_ID=402

News articles from the GIS Cafe

GIS Cafe: OGC Adopts GMLJP2 Standard. By Susan Smith



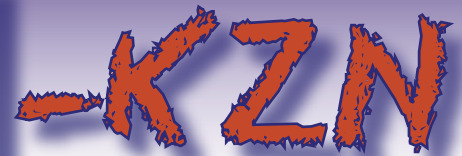
This week, LizardTech, a division of Celartem, Inc., announced that the OGC



has officially adopted the GMLJP2 standard proposed by LizardTech and Galdos Systems and a consortium of leading aerospace and geospatial technology

companies. GML is a Web-authoring language for delivering and displaying geographic data over the Internet, based on eXtensible Markup Language (XML). GML will be used to define rich geospatial

Click here to join GISSA-KZN!



metadata within a JPEG 2000 (JP2) file. Just last week, Galdos Systems, the creators of GML, won a contract from Oak Ridge National Laboratory to develop open-standards based infrastructures. The GML standard is significant because it is intended to drive cross-platform interoperability by ensuring vendor independence from formats and rapidly displaying large geospatial images over the internet.

Jon Skiffington, product manager for GeoExpress, answered some questions for us about the announcement and what this means to geospatial users:

Q: Last year LizardTech announced that they were working to extend Oracle Spatial 10g GeoRaster architecture to integrate native MrSID technology inside Oracle. This was said to be a precursor to bringing LizardTech closer toward providing JPEG2000 support for Oracle Spatial 10g in the future. Does the GMLJP2 standard adoption further that goal and if so, how, specifically?

A: We feel that this will accelerate the adoption of JPEG 2000 for geospatial raster imaging, allowing increased interoperability between systems. While Oracle Spatial can not make use of GMLJP2 natively, LizardTech will work to make sure that GML metadata in JPEG 2000 files is preserved in the Oracle database.

Q: Will the products created using the GMLJP2 standard be dependent in any way on Oracle?

A: While we anticipate that JPEG 2000 imagery will be stored within Oracle, GMLJP2 is a non-proprietary OGC standard. This means that the number of applications that will support GMLJP2 is limited only by the number of organizations that choose to build support for it.

Q: What is the difference between GeoExpress 6 "supporting JP2" and what the GMLJP2 standard allows?

A: When the current version of GeoExpress was released, GMLJP2 had not yet been adopted. Therefore, LizardTech products currently support JPEG 2000 with geospatial metadata stored internally in GeoTIFF or MrSID style, or externally in a JPEG 2000 world (.j2w) file. With the adoption of GMLJP2, new versions of GeoExpress and other LizardTech products will use the OGC GML standard, in addition to the other interim methods. This should save users any problems with applications that are expecting different types of metadata, and also opens the potential in the future for more advanced metadata such as detailed sensor models, in-depth camera positioning information (camera angle, date and time, orbit track), and image quality information such as cloud cover and air quality at the time of image capture.

The OpenGIS(R) GML in JPEG 2000 for Geographic Imagery (GMLJP2) Implementation Specification is available for download.

Acquisitions/Agreements/Alliances

GeoSpatial Innovations, Inc. (GSI), a developer of field technology solutions for energy and communications companies, and Itron Inc. announced that the two companies have teamed up to provide the most comprehensive field-to-office technology solution for electric line designers and engineers.

Under the agreement, Itron Distribution Staker will now come bundled with GSI's Pocket Designer field software. Utilities that purchase Distribution Staker will have access to a seamless field-to-office solution for creating overhead or underground electric line designs in the field. With this partnership, utilities now have the flexibility to complete their field design on a tablet, laptop or a handheld Pocket PC device.

BAE Systems has secured several international distributor agreements to expand marketing its software for image analysis, geospatial analysis, and photogrammetry, SOCET GXP(TM) and SOCET



SET(R), to major mapping and intelligence centers and commercial customers. The extended distributor network includes offices in Germany, Greece, Italy, Jordan, Korea, Lebanon, Malaysia, Singapore, Spain, and Taiwan.

East View Cartographic (EVC) announced an agreement with SPOT Image Corporation to become an authorized reseller of SPOT satellite imagery products. SPOT provides a wide range of medium-resolution imagery ideal for uses such as land management, telecom planning, or creating new street level vector data. SPOT satellites have been collecting imagery since 1986. The SPOT archives now include more than 10 million images covering most of the Earth's surface several times over.

Pictometry International Corp announced that its European partner, Blom ASA of Norway, through its subsidiary Simmons Aerofilms, has signed a contract with Ordnance Survey of Great Britain. The agreement establishes Ordnance Survey, Britain's national mapping agency, as the sole sales agent of Pictometry technology for its customers in government and private industry in Great Britain. Simmons Aerofilms will be capturing and processing the high-resolution aerial images and supplying Ordnance Survey customers with the image libraries together with training.

mPower Technologies, a technology consulting firm, software developer, and service organization; and PlanSight LLC, an ESRI authorized developer and provider of a full range of high quality GIS products and consulting services, announce their business partnership. Together they developed a new GIS-based land records portal application, CivX Integrator, allowing organizations to easily create, manage, distribute, and share GIS-based land records data without expensive and time-consuming programming or outsourced consulting.

Orbis Integrated Solutions Inc., a business consulting and technology integration firm which focuses on Investigative Solutions and Data

Management Solutions, announced the partnership with ARCBridge Consulting & Training Inc., a GIS solutions firm, to deliver wireless GIS mapping solution leveraging handheld PDA technology.

Telvent GIT S.A., the Global RealTime IT Company, announced that it has acquired the remaining 30% of Miner and Miner, Consulting Engineers, Incorporated (Miner & Miner) that it did not already own. Telvent initially acquired 70% of the issued and outstanding shares of Miner & Miner in December 2004. Miner & Miner is a worldwide leader in the development and implementation of Geographical Information Systems (GIS) software for utilities.

New Products

Safe Software Inc., announced the immediate availability of a French localization add-on for their core product, the Feature Manipulation Engine (FME). The French localization was prepared by Veremes, one of Safe Software's resellers based in France, and is the second localization of FME to be completed. A German localization, prepared by Con Terra, has been available for over a year.

MapInfo Corporation, the global provider of location intelligence solutions, introduced Envinsa Version 4.0, a comprehensive unified location platform. With Envinsa v4.0, organizations in all industries can derive the greatest value from location information, resulting in increased revenue, lower costs, enhanced efficiencies and improved service.

MapInfo also announced the launch of a new version of its successful UK health sector mapping application suite.

MapInfo HealthPro2 provides NHS managers and analysts with access to the leading desktop solution for analyzing location related information. It specifically allows NHS organizations in England to fully capitalize on the digital map data now available to them under the recent Ordnance Survey Pilot NHS agreement. Ambulance Trusts, which will be covered by the agreement from April 2006, will also

[Click here to join GISSA-KZN!](#)



benefit from the scheme.

MWH Soft, a global provider of environmental and water resources applications software, announced the worldwide release of InfoWater UDF, a state-of-the-art geocentric solution for unidirectional flushing of drinking water distribution systems. InfoWater UDF delivers unprecedented power and flexibility in managing the systematic flushing of water distribution systems to remove stagnant water along with mineral and sediment deposits that accumulate over time - restoring hydraulic capacity and improving water quality.

Matrox Graphics Inc., manufacturer of graphics solutions for professionals, announces Extio F1400, the world's first remote graphics unit. With this solution, the user interface of the computer -- the keyboard, mouse, monitors, audio peripherals, and graphics hardware -- are separated from the rest of the computer by up to 250 meters (820 feet) of fiber-optic cable. Designed for professional applications, this product supports up to 4 digital or analog monitors at a time, and has passive (fanless) cooling.

The **Geographic Resources Analysis Support System**, commonly referred to as **GRASS GIS**, is a Geographical Information System (GIS) used for data management, image processing, graphics production, spatial modeling, and visualization of raster, vector and sites data. It is open source Free

Software released under the GNU General Public License (GPL). The new features of GRASS 6 cover a new topological 2D/3D vector engine and support for vector network analysis. Attributes are now managed in an SQL-based DBMS. A new display manager has been implemented. The NVIZ visualization tool was enhanced to display 3D vector data and voxel volumes. Messages are partially translated (i18N) with support for FreeType fonts, including multibyte Asian characters. New LOCATIONS can be auto-generated by EPSG code number. GRASS is integrated with GDAL/OGR libraries to support an extensive range of raster and vector formats, including OGC-conformal Simple Features.

Ekahau Inc., provider of a Wi-Fi based Real Time Location System (RTLS) solution and Site Survey tools, announced the new version 2.2 of Ekahau Site Survey (ESS). The updated version can now provide large enterprises with better survey capabilities for large-scale networks.

Webraska, a provider of mobile GPS navigation solutions and high-end geospatial software platforms for wireless carriers and major service providers worldwide, announced that Orange has selected Webraska's new Webraska Navigation 6 software for the upcoming version of its Orange Navigation solution.

Please feel free to e-mail me any news that may be of interest to our GISSA-KZN members.

No spam please!

Liability Disclaimer:

Documents and information provided from GISSA or GISSA-KZN do not warrant or assume any legal liability or responsibility for the accuracy, completeness, or usefulness of any information, apparatus, product, or process disclosed.

[Click here to join GISSA-KZN!](#)