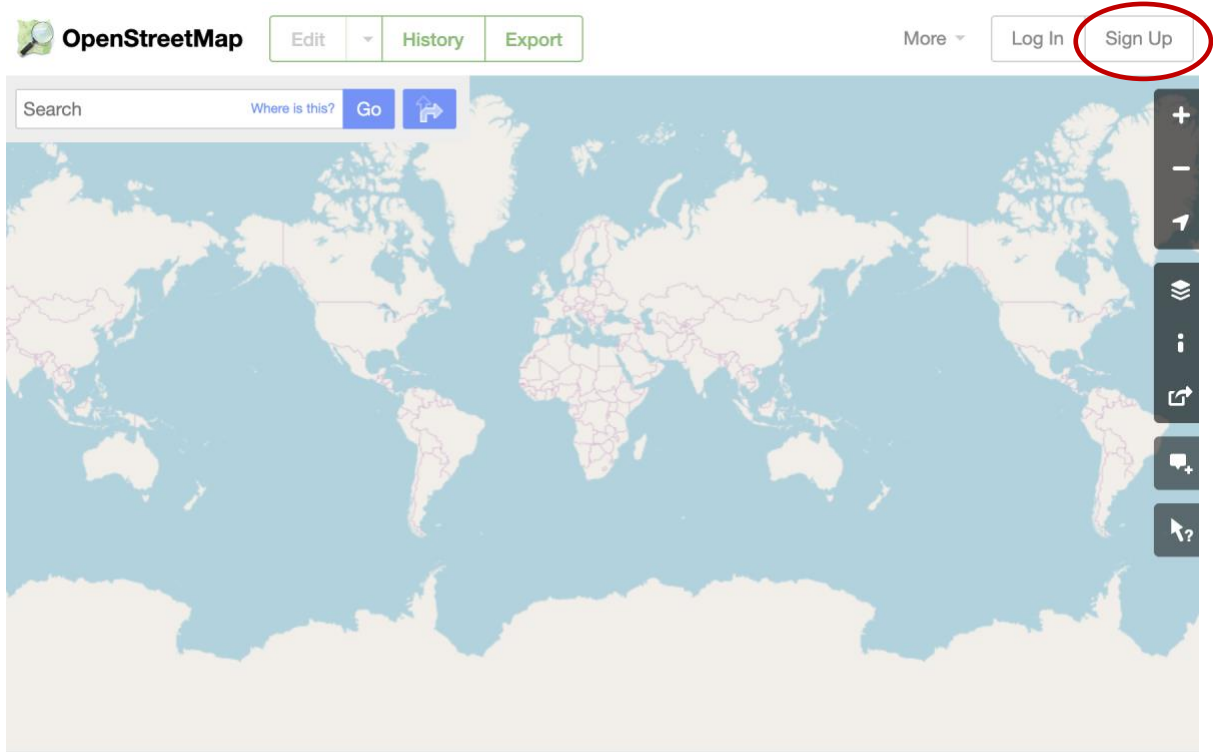


OSM Cheat Sheet – four easy steps to start mapping

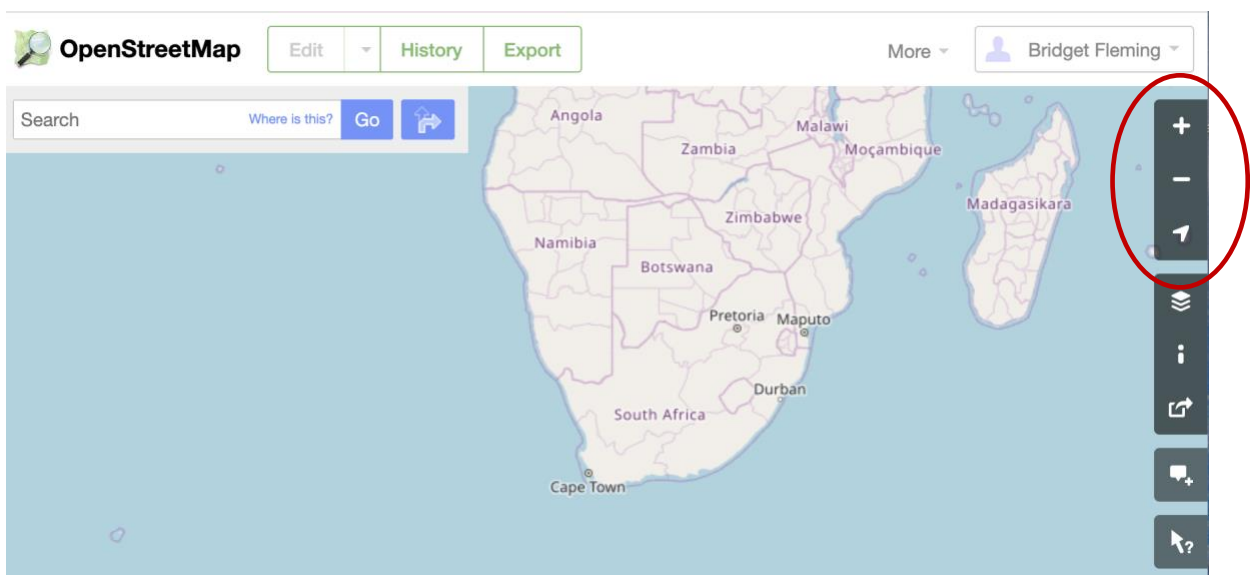
Step 1: Register on OSM OpenStreetMap website

- Go to <https://www.openstreetmap.org>
- Click on “Sign Up” if you have never logged in before. Keep your password safe and a confirmation mail will be sent to you. Once logged in, you can start mapping.



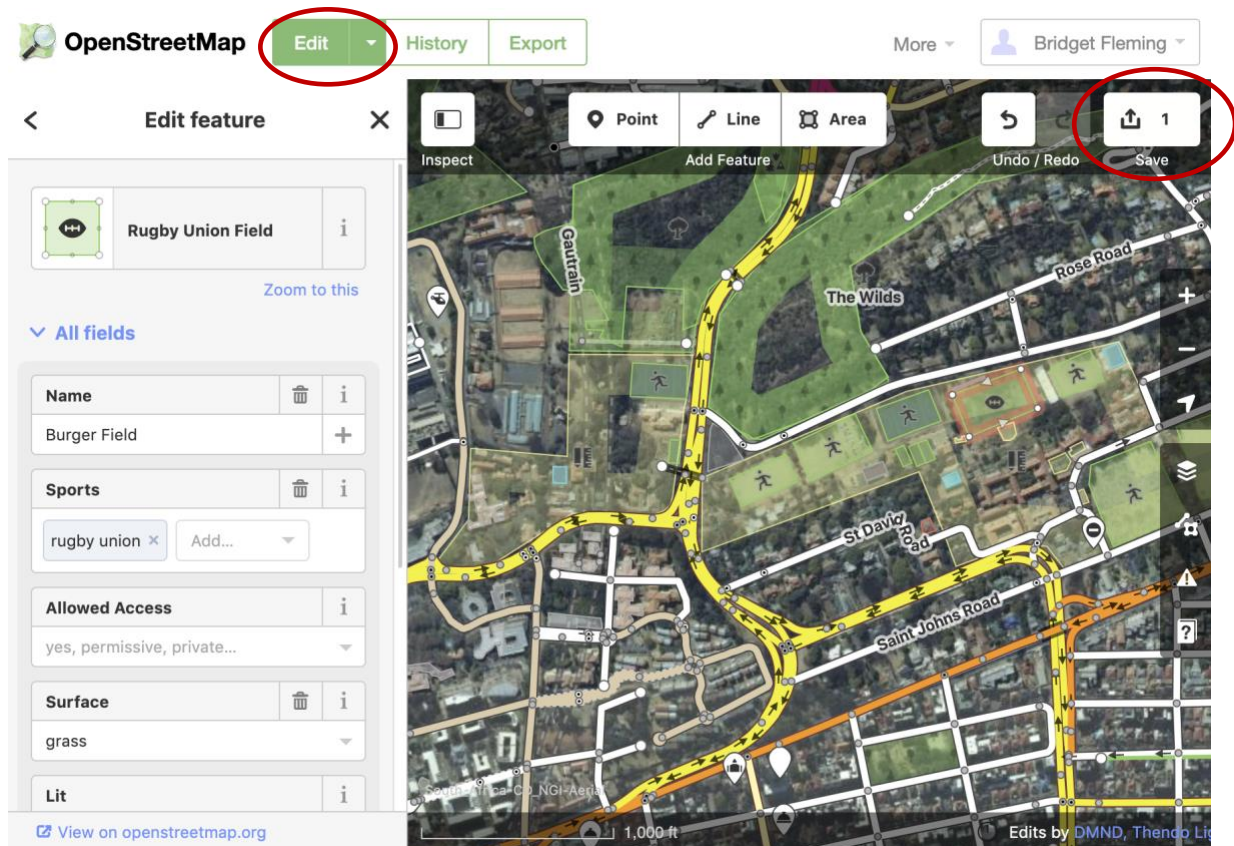
Step 2: Find the location you want to map

- Use the zoom in or out tool on the right or type in your location in “search” and click “Go”.

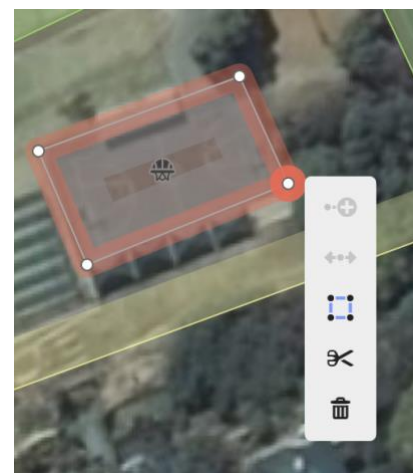


Step 3: How to Edit

- Click on the “Edit” tool.
- Make sure you have zoomed in sufficiently to digitise map features accurately.
- Decide if your map feature is a “Point”, a “Line” or an “Area”/Polygon. Click on the feature type and place the cross hairs on the feature you are mapping.



- “Left” click on your mouse or touch pad to make a point then move and click again to build up the feature, then “right” click to close a polygon or end a line. Right click again or press ‘q’ to make sure the corners are square. The option to “cut” or “delete” is also available when you “right” click.
- You then have the option to add “attribute data” to your newly digitised map feature. On the left you can add “fields” or attributes by clicking on the drop-down option. Populate as many fields as you can from what you can see in the photo or what you know about the feature. Above you can see the Name “Burger field”; Sports “rugby”; access is allowed and the surface is “grass”. You have the option to edit later once you have ‘ground-truthed’ the feature in real life.



- Don't forget to save (top right) once you have mapped/digitised your map features. You must write a comment ('commit message') describing what you did each time you save.
- Once your data is saved, you can "Export" your data as an .osm file and load it into QGIS.

Step 4:

Watch this 10 min YouTube video

<https://www.youtube.com/watch?v=lr-3K0pjwOI>

on how to map in OSM and why mapping is so important and can save lives.

